

**Hornady**  
Accurate. Deadly. Dependable.

# Handheld Priming Tool

The Hornady Handheld Priming Tool incorporates an ergonomic design and is engineered to operate with fewer parts for a lifetime of hassle-free, easy-to-use priming. This priming tool features a covered primer tray with ribs to orient primers to their correct and safe position for priming. Plus this tool is designed to deliver a positive prime using standard shell holders.

## GETTING STARTED:

The Hornady Handheld Priming Tool comes partially assembled in the box, consisting of the hand priming tool body assembly, primer trays, primer seating pins, and return spring.

## Safety Notice Before Assembly or Operation:

1. Always wear safety glasses when priming or handling primers.
2. Careless or improper handloading techniques can result in serious personal injury.
3. Primers are designed to explode and will do so when subjected to heat or percussion.
4. Keep away from children.
5. Do not smoke near primers.
6. DO NOT force primers during priming process. A single primer exploding will set off a chain reaction causing primers in the tray and in the vicinity to violently detonate.
7. DO NOT store or handle primers in bulk.
8. For identification and safety, keep primers in their original protective packaging.
9. An Absolute minimum number of primers should be kept at the loading operation at any given time. Open only one package tray (100 primers) at a time.
10. DO NOT decap live primers.
11. DO NOT attempt to seat, or reseat a primer in a loaded round.
12. For large primers us ONLY the large primer seater pin and for small primers us ONLY the small primer seater pin.
13. Use the small primer size boss for small primers. Using the large primer size boss for small primers can cause misalignment and can result in primer detonation.

## Assembly:

1. The priming tool body comes pre-assembled and adjusted. Do not attempt to adjust any parts or features of the priming tool body or other parts as this can cause unsafe or improper function of the Handheld Priming Tool.
2. Two primer seating pins are included with your Handheld Priming Tool. The small and large pin should be matched to the primer size you will be using during operation. Do not use the small pin for large primers or the large pin for small primers, this can cause misalignment issues when priming the case and can cause a primer to discharge during priming. Always ensure the correct size primer seating pin is used for each priming operation.
3. Install the correct size primer seater pin into the follower. Place the end of the pin with the tapered shoulder down into the hole in the follower.
4. Next, place the return spring over the primer seating pin.
5. Two primer trays are included with your Handheld Priming Tool. The black tray is compatible with Hornady shell holders and has both a large and small primer size boss on each end of the primer tray. The green primer tray is compatible with RCBS shell holders and incorporates the same large and small primer size boss as the black tray. The primer tray lid can be used on both primer trays. A visual size difference can be seen to determine which primer size boss should be inserted into the tool body.
6. With the proper primer seater pin and spring installed in the tool body, the primer tray can be installed. The round portion around the primer size boss on the primer tray is slid into the tool body from the top. Once the tray is started into the tool body, press it down compressing the return spring and hold in the down position.
7. With the primer tray held down the proper shell holder can be installed into the cutout on the side of the tool body above the primer tray size boss. Once the shell holder is pushed all the way into the tool body the primer tray can be released and should come to rest at the base of the shell holder.



8. The primer tray lid can be unlocked or locked by turning the lid to disengage or engage the locking ears to the primer tray. The primer tray lid incorporates stops on each end of the lid. The larger stop should be positioned to block the primer size boss that is not in use to prevent primers from falling out of the tray during operation. The small stop can be turned to block primers from entering the primer tool body when not in use. Ensure that the locking ears of the primer tray lid are properly engaged to prevent the lid from prematurely coming off during use.

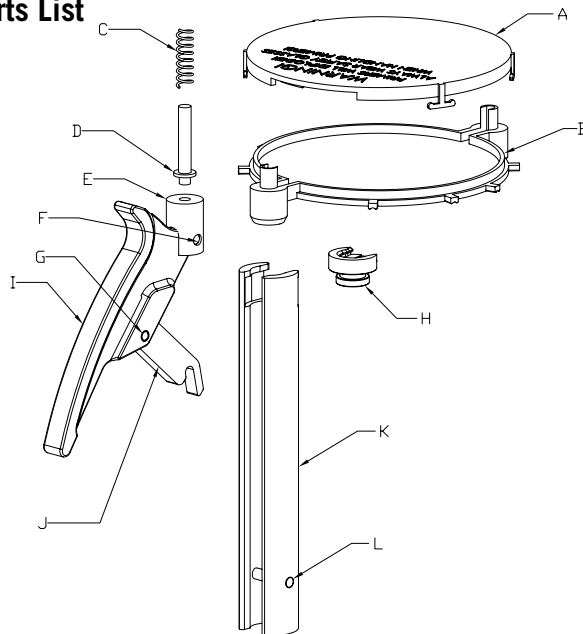
## Loading the Primers

Primers can be loaded after the primer tray is attached. Remove the primer tray lid and carefully transfer primers out of the factory package into the primer tray. Primers that land anvil down will need to be flipped upright before priming. Gently shaking the tray from side to side or physically turning each of the primers can be used to correct upside down primers prior to use. Once all the primers are in the proper position in the tray, the primer tray lid can be installed with the small primer stop preventing the primers from spilling out through the tool body. **NEVER put more than 100 primers in the tray at one time.**

## Priming Cases

The Handheld Priming Tool is now ready to use. To prime cases, hold the priming tool comfortably in your hand. Tilt the tool away from you for safety and proper feeding of primers from the tray. Insert an unprimed case into the shell holder. With even gentle pressure, slowly squeeze the handle until you feel the primer seat

## Parts List



Key	Description	Item #	Key	Description	Item #
A	Lid	398721	F	Follower Hinge Pin	392473
B	Black Tray (Hornady)	398722	G	Handle Hinge Pin	392472
	Green Tray (RCBS)	398723	H	Shell Holder	
C	Return Spring	398713	I	Handle	392469
D	Primer Seater Pin, Lg	398744	J	Link	398727
	Primer Seater Pin, Sm	398745	K	Body	398714
E	Follower	398730	L	Body Pin	398720

in the bottom of the primer pocket. Release the handle, remove the case, and inspect for seated depth. Seating depth should be .001 to .005 inches below the face of the case head. Do not attempt to reseat primers in a completed cartridge. If you find this necessary, pull the bullet, dump the powder, and reseat the primer.

1. If fired brass is being used, ensure the primer pockets have been cleaned to provide proper and safe priming of the case.
2. Insert the unprimed case into the shell holder checking that it is pushed all the way to the back of the shell holder. If the case is not pushed all the way into the shell holder, the primer can catch on the edge of the primer pocket not allowing the primer to seat and possibly causing detonation of the primer if excessive force is used.
3. To prime the case, turn the primer tray lid to disengage the primer stop and allow the primer to enter the tool body. Tilt the tool away from you for safety and proper feeding of the primers in the tray. NEVER look down into the case or have the priming tool close to your face when priming.
4. Exert even, gentle pressure by slowly squeezing the handle until you feel the primer seat in the bottom of the primer pocket. **DO NOT** hold the case with your other hand during priming. **IF YOU ENCOUNTER RESISTANCE, STOP.** Inspect the case to ensure the primer is oriented correctly, and the case is deprimed.
5. Release the handle to its fully open position and remove the primed case from the shell holder.
6. Inspect the primer in the case for seating depth by feeling with your finger or finger nail or placing on a flat surface and

trying to rock the case side to side. Primers should be seated .001 to .005 inches below the face of the case head. If the primer is not seated deep enough, the case can be reinserted and pressure applied again.

7. **NOTE:** If the primer needs to be seated deeper ensure that the primer stop has been engaged by turning the primer lid before placing the case back in the shell holder. Visually inspect to make sure that no primers are resting on the primer seater pin in the tool body. If the case is reinserted to "reseat" the primer without the stop being engaged a primer can slide into the tool body and possibly be detonated when it is squeezed between the primer already in the case and the primer seater pin.
8. **NOTE:** Never try to reseat a primer of a loaded round. If a primer is found that hasn't been seated deep enough after the round has already been loaded, the bullet must be pulled and the powder emptied from the case before the primer can be re-seated.

## Maintenance:

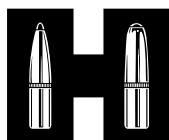
As with all mechanical tools, proper routine maintenance will provide smooth operation and a longer life. On a regular basis, clean the primer tray and other parts to prevent buildup of dust and primer residue. Occasionally lubricate the handle and body pins with a drop of light grade machine oil. Lubricate the follower using light grease. Lubricate sparingly. Oil and grease can contaminate primers causing them to misfire.

If you have any questions about the use of this tool please call 800-338-3220 and ask for Technical Service.

Since Hornady Manufacturing has no control over the choice of components, the manner in which they are assembled, the use of this product, or the guns in which the resulting ammunition may be used, no responsibility, either expressed or implied, is assumed for the use of ammunition reloaded with this product.

## SHELL HOLDERS

Cartridge	Shell Holder No.	Shell Holder Item No.	Cartridge	Shell Holder No.	Shell Holder Item No.	Cartridge	Shell Holder No.	Shell Holder Item No.	Cartridge	Shell Holder No.	Shell Holder Item No.
17 REM	16	390556	6.5-06	1	390541	7.5 SWISS	2	390542	38 S&W	28	390568
17 REM FIREBALL	16	390556	6.5-284	1	390541	7.62X39	6	390546	9X18 MAKAROV	8	390548
17-222	16	390556	6.5MM TCU	16	390556	7.62 RUSSIAN	23	390563	9.3X57	1	390541
17-223	16	390556	6.5X55 SCAN (SWEDISH)	19	390559	30 MAUSER	8	390548	9.3X62	1	390541
20 TACTICAL	16	390556	6.5X57	1	390541	303 SAV	33	390573	9.3X74R	13	390553
204 RUGER	16	390556	6.5X68	30	390570	32 AUTO	22	390562	375 H&H	5	390545
218 BEE	7	390547	6.5 CARC	21	390561	303 BRITISH	11	390551	375 JDJ	27	390567
22 RCFM-JET	6	390546	270 REN	3	390543	32 H&R MAG	36	390576	375 REM ULTRA MAG	5	390545
219 ZIPPER	2	390542	270 WBY MAG	5	390545	32 S&W	36	390576	375 RUGER	5	390545
22 HORNET	3	390543	270 WIN	1	390541	32 S&W LONG	36	390576	375 WIN	2	390542
22 K-HORNET	3	390543	270 WSSM	35	390575	32-20 WIN	7	390547	376 STEYR	15	390555
22 PPC	6	390546	6.8 REM SPC	12	390552	327 FEDERAL	36	390576	378 WBY MAG	14	390554
220 SWIFT	4	390544	280 REM ACK IMP	1	390541	7.65 BELGIAN	24	390564	38-55 WIN	2	390542
220 VT	16	390556	280 REM/7MM EXP	1	390541	7.7 JAP	1	390541	10MM AUTO	10	390550
221 REM FIREBAL	16	390556	284 WIN	1	390541	8.15X46R	2	390542	38-40 WIN	9	390549
222 REM	16	390556	7MM MERRILL	4	390544	7.5 SWISS ORDEN	48	390604	40 S&W	10	390550
222 REM MAG	16	390556	7MM REM BR	1	390541	32 REM	12	390552	400 COR-BON	1	390541
22-250 ACK IMP	1	390541	7MM REM MAG	5	390545	32 WIN SPL	2	390542	41 REM MAG	29	390569
22-250 REM	1	390541	7MM REM ULTRA MAG	5	390545	32-40 WIN	2	390542	405 WIN	42	390582
223 REM	16	390556	7MM RSAUM	5	390545	325 WSM	35	390575	10.3X60	25	390565
223 WSSM	35	390575	7MM STW	5	390545	7.92X33MM KURZ	1	390541	416 REM MAG	5	390545
224 WBY MAG	17	390557	7MM TCU	16	390556	8MM REM MAG	5	390545	416 RIGBY	38	390578
225 WIN	4	390544	7MM WBY MAG	5	390545	8MM-06	1	390541	416 RUGER	5	390545
5.6X50 MAG	16	390556	7MM WSM	35	390575	8X50 LABEL	49	390605	416 WBY MAG	14	390554
5.6x57	1	390541	7MM-08	1	390541	8X57 (8MM MAUSER)	1	390541	404 JEFFERY*	53	390608
5.7 JOHNSON SPITFIRE	22	390562	7MM-223 INGRAM	16	390556	8X60 S	1	390541	44-40 WIN	9	390549
5.7X28MM FN	37	390577	7X30 WATERS	2	390542	8X68 S	30	390570	44 AUTO MAG	1	390541
22 SAV HP	2	390542	7X47 HELM	16	390556	8MM LABEL (HANDGUN)	48	390604	44 REM MAG	30	390570
5.6X52R	2	390542	7X57 (7MM MAUSER)	1	390541	8X56R HUNG-MANN	47	390603	44 SPECIAL	30	390570
240 WBY MAG	1	390541	7X57R	13	390553	33 WIN	14	390554	444 MARLIN	27	390567
243 WIN	1	390541	7X61 S&H	35	390575	338 FEDERAL	1	390541	445 SUPER MAG	30	390570
243 WSSM	35	390575	7X64	1	390541	338 LAPUA	43	390583	45 AUTO	45	390606
244/6MM REM	1	390541	7X65R	13	390553	338 MARLIN EXPRESS	52	390607	45 AUTO RIMMED	31	390571
6MM INT	1	390541	7.35 CARC	21	390561	338 NORMA MAG	43	390583	45 WIN MAG	45	390606
6MM PPC	6	390546	30 REM	12	390552	338 RCM	5	390545	45 COLT	32	390572
6MM REM BR	1	390541	30 HERRETT	2	390542	338 REM ULTRA MAG	5	390545	45 SCHOFIELD	41	390581
6MM TCU	16	390556	30 LUGER	8	390548	338 WIN MAG	5	390545	454 CASULL	32	390572
6MM-223	16	390556	30 M1 CARBINE	22	390562	338-06	1	390541	460 S&W	46	390602
6MM-284	1	390541	300 H&H	5	390545	338-378 WBY MAG	14	390554	455 WEBLEY	51	390601
6X47 REM	16	390556	300 OLYMPIC (OSSM)	35	390575	340 WBY MAG	5	390545	45/70 GOV	14	390554
25 AUTO	37	390577	300 RCM	5	390545	348 WIN	25	390565	450 BUSHMASTER	1	390541
25 WSSM	35	390575	300 REM ULTRA MAG	5	390545	357 SIG	10	390550	450 MARLIN	5	390545
250 SAV	1	390541	300 RSAUM	5	390545	380 AUTO	16	390556	450 NITRO EXPRESS*	54	390609
25-06 REM	1	390541	300 SAV	1	390541	9MM LUGER	8	390548	450-400 NE 3"	25	390565
25-20 WIN	7	390547	300 WBY MAG	5	390545	9X21	8	390548	458 LOTT	5	390545
25-284	1	390541	300 WIN MAG	5	390545	9X23 WIN	8	390548	458 SOCOM	1	390541
25-35 WIN	2	390542	300 WSM	35	390575	38 AUTO	8	390548	458 WIN	5	390545
256 WIN MAG	6	390546	30-06 SPRINGFIELD	1	390541	38 SUPER AUTO	8	390548	460 WBY MAG	14	390554
257 RBTS	1	390541	30-30 ACK IMP	2	390542	357 MAGNUM	6	390546	470 NITRO EXPRESS*	55	390610
257 WBY MAG	5	390545	30-30 WIN	2	390542	357 REM MAX	6	390546	475 LINEBAUGH	14	390554
25 REM	12	390552	30-378 WBY MAG	14	390554	357-44 B&D	30	390570	480 RUGER	14	390554
260 REM	1	390541	30-40 Krag	11	390551	38 SPECIAL	6	390546	50 A&E	40	390580
264 WIN MAG	5	390545	307 WIN	33	390573	35 REM	26	390566	50 BEOWOLF	6	390546
6.5 CREEDMOOR	1	390541	308 MARLIN EXPRESS	27	390567	357 HERRETT	2	390542	500 S&W	44	390584
6.5 GRENDDEL	6	390546	308 NORMA MAG	5	390545	35 WHELEN	1	390541	50 ALASKAN	25	390565
6.5 JAP	34	390574	308 WIN	1	390541	350 REM MAG	5	390545	500 LINEBAUGH	25	390565
6.5 JDJ	4	390544	309 JDJ	27	390567	356 WIN	33	390573	500 NITRO EXPRESS*	55	390610
6.5 MANN	20	390560	30MM MERRILL	4	390544	358 NORMA MAG	5	390545			
6.5 REM MAG	5	390545	30TC	1	390541	358 WIN	1	390541			



**Hornady**  
Accurate. Deadly. Dependable.

P.O. Box 1848 • Grand Island, NE 68802-1848  
308-382-1390 • [www.hornady.com](http://www.hornady.com)